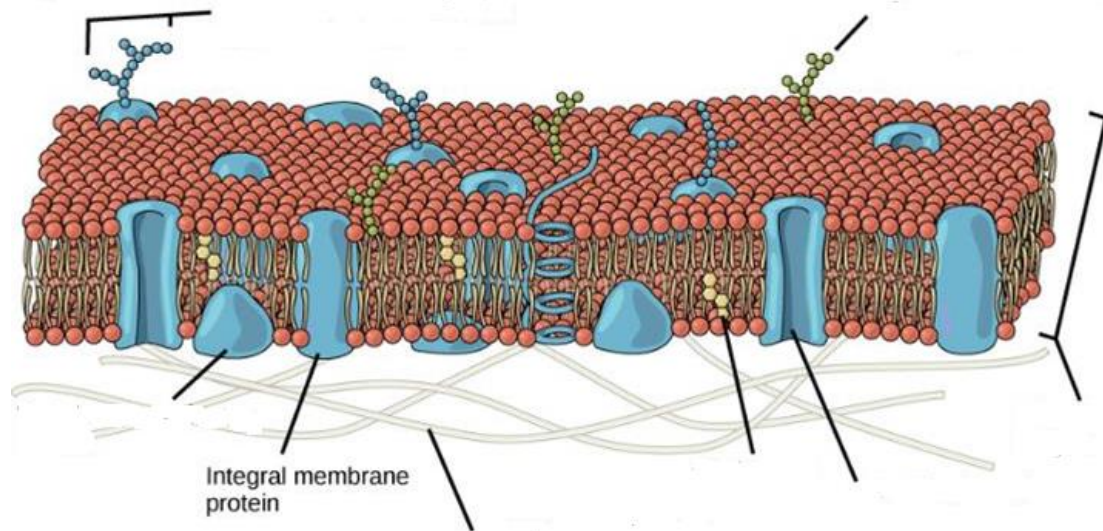


YOU MUST HAND WRITE THESE ANSWERS!!!

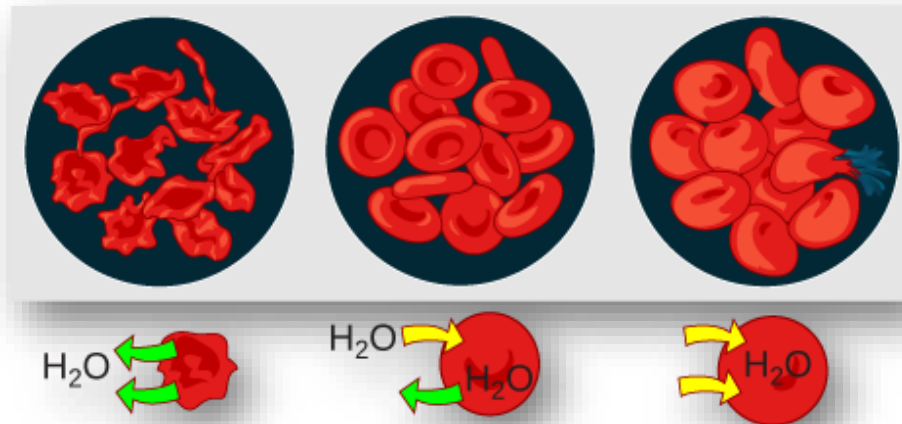
1. Label the parts of the cell membrane:



2. What is a phospholipid?
3. List the 6 functions of membrane proteins:
4. Describe passive transport.
5. Describe diffusion.
6. Describe facilitated transport.

7. Describe osmosis.

8. Label hypertonic, isotonic, hypotonic. Circle the cell that will lyse.



9. Describe active transport.

10. What happens at the sodium-potassium pump?

11. What is an antiporter?

12. Describe the 3 types of bulk transport across the cell membrane.