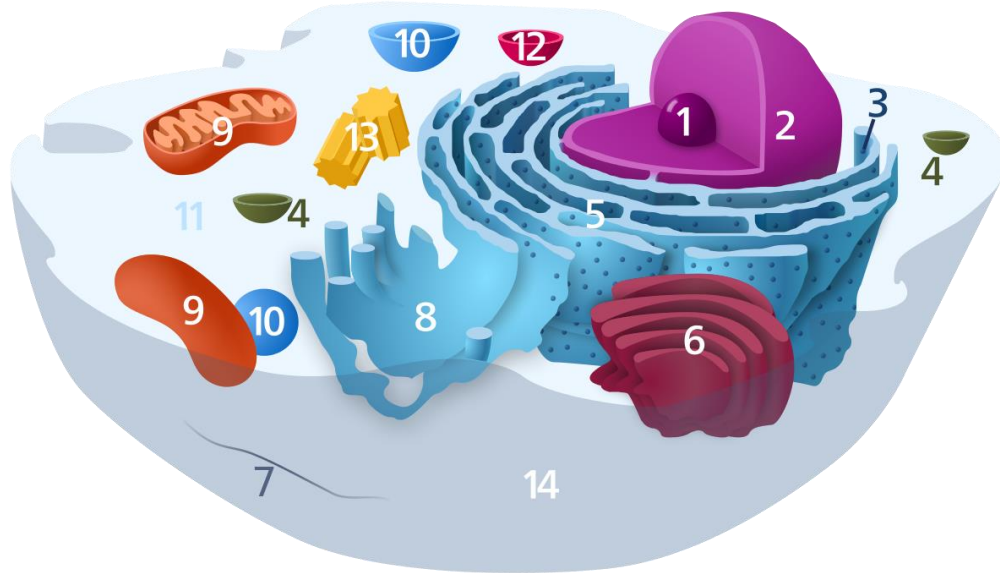
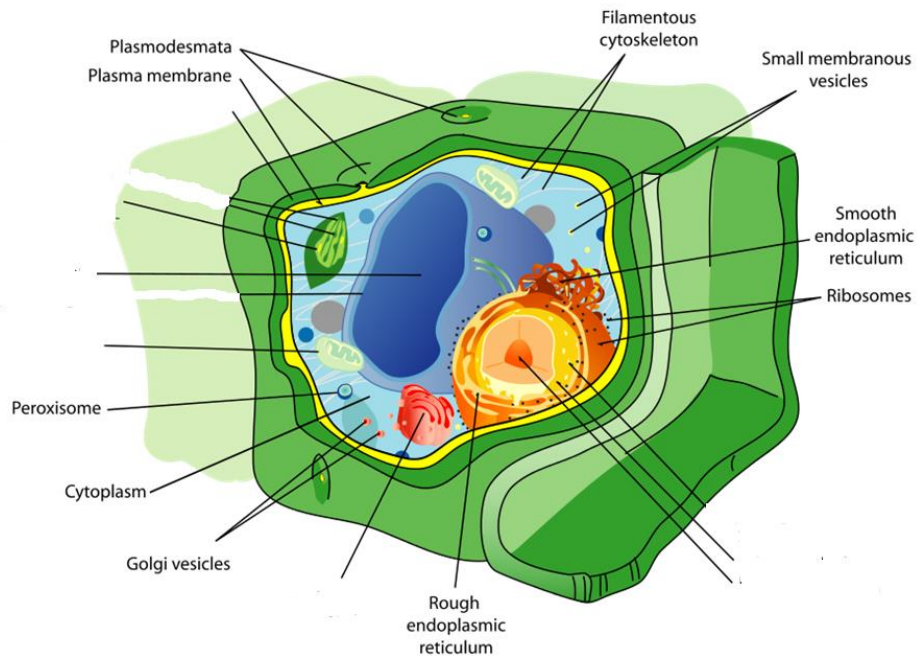


YOU MUST HAND WRITE THESE ANSWERS!

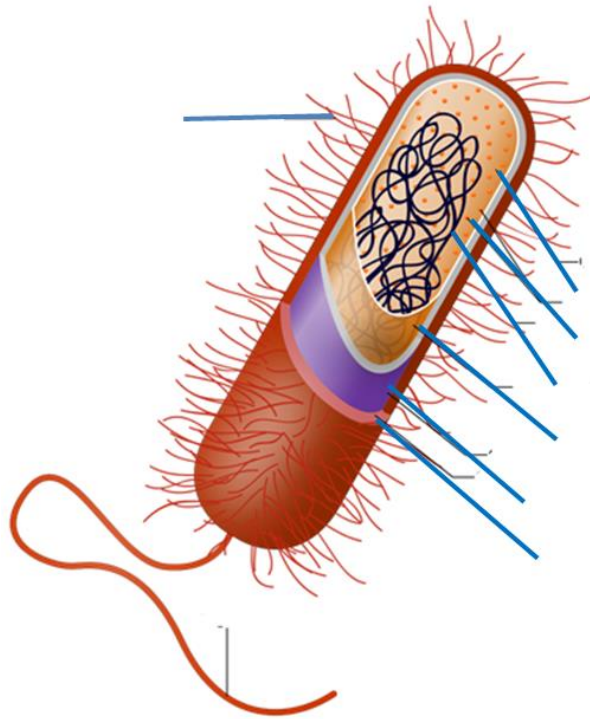
1. Label the parts of the animal cell (know the function of each organelle):
- 2.



3. Label the parts of the plant cell (know the function of each organelle):



4. Label the parts of the bacterial cell:



5. Describe why it is important for cells to remain small.

6. What are the components of the cytoskeleton?

7. List the cell connections discussed.

8. What makes up the eukaryotic flagella? Look at the cross-section.